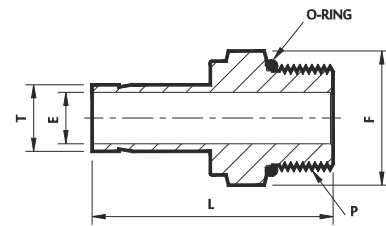


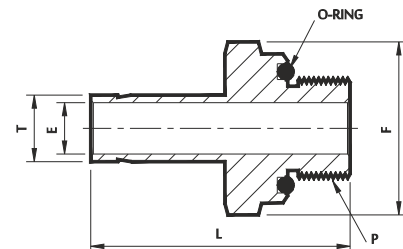
2.35 Male Adapter

08. Fractional Stub x SAE/MS Straight (M)



Sr. No.	TUBE OD Ø T	SAE/MS Male Pipe Size P	Ref. Part No.	ØE	L	Body Hex F
Dimensions in Inches						
1	(1/8) x (5/16 x 24)		2MAD 5SM	0.09	1.20	7/16
2	(1/4) x (7/16 x 20)		4MAD 7SM	0.19	1.39	9/16
3	(3/8) x (7/16 x 20)		6MAD 7SM	0.19	1.46	9/16
4	(3/8) x (9/16 x 18)		6MAD 9SM	0.28	1.52	11/16
5	(3/8) x (3/4 x 16)		6MAD 12SM	0.28	1.60	7/8
6	(1/2) x (9/16 x 18)		8MAD 9SM	0.39	1.74	11/16
7	(1/2) x (3/4 x 16)		8MAD 12SM	0.39	1.82	7/8
8	(5/8) x (7/8 x 14)		10MAD 14SM	0.50	1.94	1
9	(3/4) x (1.1/16 x 12)		12MAD 17SM	0.59	2.10	1 1/4
10	(1) x (1.5/16 x 12)		16MAD 21SM	0.80	2.41	1 1/2

09. Fractional Stub x O-seal SAE/MS Straight (M)



Sr. No.	TUBE OD Ø T	ISOP Male Pipe Size P	Ref. Part No.	ØE	L	Body Hex F
Dimensions in Inches						
1	(1/8) x 5/16 x 24)		2MAD 5OSM	0.09	1.28	9/16
2	(3/16) x (3/8 x 24)		3MAD 6OSM	0.12	1.38	5/8
3	(1/4) x (7/16 x 24)		4MAD 7OSM	0.19	1.54	3/4
4	(5/16) x (1/2 x 24)		5MAD 8OSM	0.25	1.64	7/8
5	(5/16) x (9/16 x 24)		5MAD 9OSM	0.28	1.70	15/16
6	(3/8) x (9/16 x 18)		6MAD 9OSM	0.28	1.70	15/16
7	(1/2) x (3/4 x 24)		8MAD 12OSM	0.39	1.95	1.1/8
8	(5/8) x (7/8 x 14)		10MAD 14OSM	0.50	2.12	1.3/8
9	(3/4) x (1.1/16 x 12)		12MAD 17OSM	0.62	2.16	1.1/2
10	(1) x (1.5/16 x 12)		16MAD 21OSM	0.88	2.47	1.3/4

- This type of fittings can be adapted as a bulkhead fitting on thin wall tanks or vessels, eliminating welding, brazing or threading. Used 'MOSMD' as Lock Nut.
- O-ring provided are Buna-N standard and Viton - optional.

NOTE : ① The E Dimension is the minimum opening & Fittings of this group may be back drilling to larger ID at pipe thread or straight thread end.
② SAE/MS (UNF) thread as per ASME B1.1.