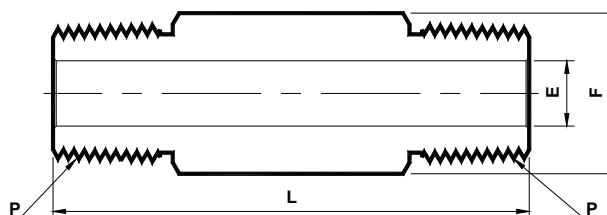


## 05. Hex Long Nipple

NPT (M) x NPT (M)  
(N - PHLN)



Sr. No.	NPT ② Male Pipe Size P	Ref Part No.	L					ØE ①	Hex F
			Available Lengths						
			1.50	2.00	2.50	3.00	4.00		
	Dimensions in Inches								
1	1/16 x 27	1N PHLN (x)			x			0.12	7/16
2	1/8 x 27	2N PHLN	A	A	A	A	N/A	0.19	7/16
3	1/4 x 18	4N PHLN	A	A	A	A	A	0.28	9/16
4	3/8 x 18	6N PHLN	A	A	A	A	N/A	0.38	11/16
5	½ x 14	8N PHLN	N/A	A	N/A	A	A	0.47	7/8
6	3/4 x 14	12N PHLN	N/A	A	N/A	A	A	0.62	1.1/16
7	1 x 11.5	16N PHLN	N/A	N/A	N/A	A	A	0.88	1.3/8

- Specified length (x) to be shown as last designator in the ordering number; example : 1N - PHLN - 2.00
- A - Available, N/A - Not Available

NOTE : ① The 'E' Dimension is the minimum opening.

② NPT thread as per ANSI B 1.20.1.